



Highland Road, SE19 | Guide Price £400,000

020 8702 9333

crystalpalace@pedderproperty.com

pedder
We live local



In General

- Two bedroom ground floor apartment
- No onward chain
- Private terrace
- Residents parking
- Low rise art deco development
- Central location

In Detail

Guide price £400,000-£425,000

A neatly presented two double bedroom ground floor apartment forming part of a low-rise Art Deco development, ideally positioned for central Crystal Palace and excellent transport links.

The accommodation offers a comfortable and well-balanced layout, ideal for first-time buyers or those looking to downsize. The kitchen provides ample worktop and storage space, with direct access to a private terrace and a gate leading to the well-maintained communal grounds. The larger of the two bedrooms benefits from fitted wardrobes and a rear-facing position, while the reception room enjoys an easterly aspect, allowing for plenty of natural light.

Further benefits include residents' parking, a long lease, and no onward chain.

Situated in a quiet location, the property offers easy access to both Gipsy Hill and Crystal Palace rail links, as well as a wide range of shopping and leisure amenities at the vibrant Crystal Palace Triangle.

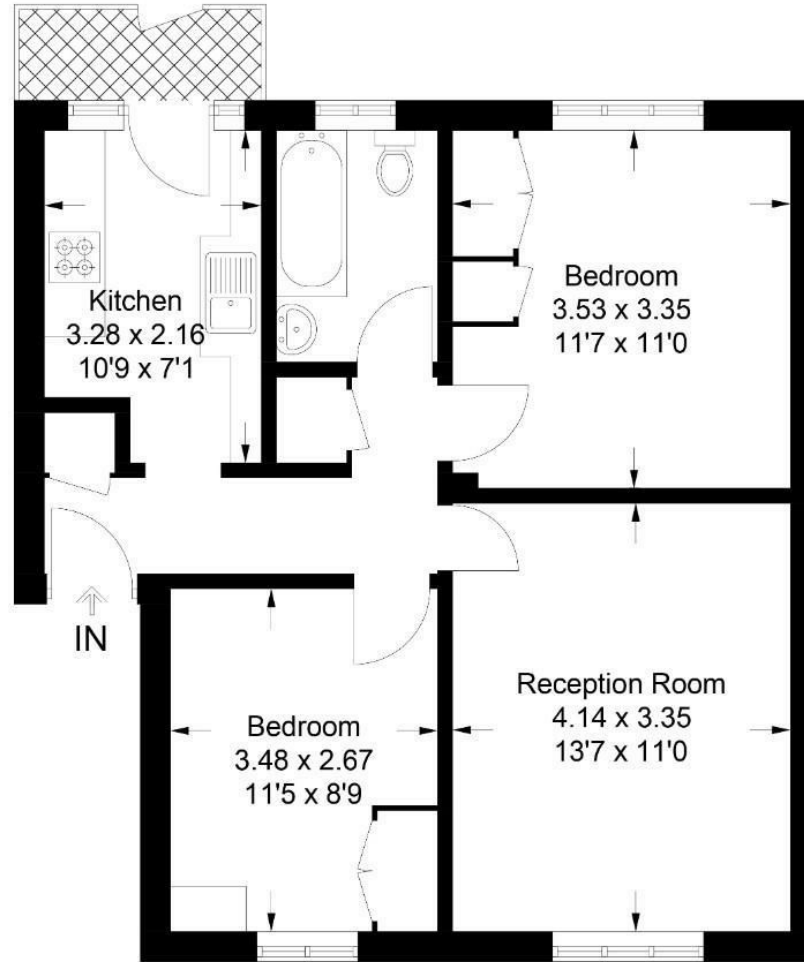
EPC: D | Council Tax Band: B | Lease: TBC Years Remaining | SC: £1,430pa | GR: TBC | BI: TBC



Floorplan

Highlands Court, SE19

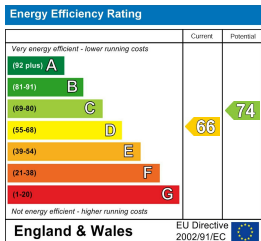
Approximate Gross Internal Area = 54.7 sq m / 589 sq ft



Ground Floor

Copyright www.pedderproperty.com © 2026

These plans are for representation purposes only as defined by RICS - Code of Measuring Practice. Not drawn to Scale. Windows and door openings are approximate. Please check all dimensions, shapes and compass bearings before making any decisions reliant upon them.



Pedder Property Ltd trading as Pedder for themselves and for the vendor/landlord of this property whose agents they are, give notice that (1) these particulars do not constitute any part of an offer or contract, (2) all statements contained within these particulars are made without responsibility on the part of Pedder or the vendor/landlord, (3) whilst made in good faith, none of the statements contained within these particulars are to be relied upon as a statement of representation or fact, (4) any intending purchaser/tenant must satisfy him/herself by inspection or otherwise as to the correctness of each of the statements contained within these particulars, (5) the vendor/landlord does not make or give either Pedder or any person in their employment any authority to make or give representation or warranty whatsoever in relation to this property.